



EdgeMAX®

Advanced Network Routers

Model: ERPro-8, ER-8, ERPoe-5, ERLite-3

Sophisticated Routing Features

Advanced Security, Monitoring, and Management

High-Performance Gigabit Ports





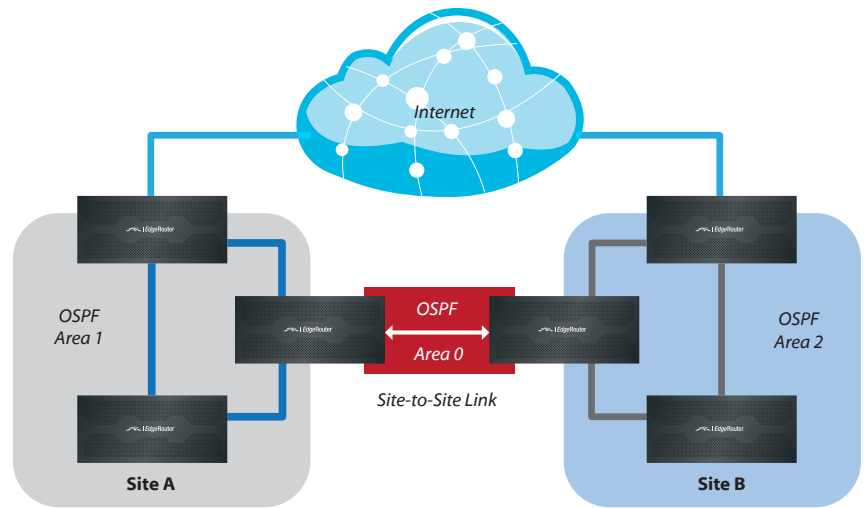
Advanced Routing Technology for the Masses

Introducing the EdgeRouter™ from Ubiquiti Networks™, part of the EdgeMAX® platform. EdgeRouters combine carrier-class reliability with enterprise-level features in a compact and affordable unit.

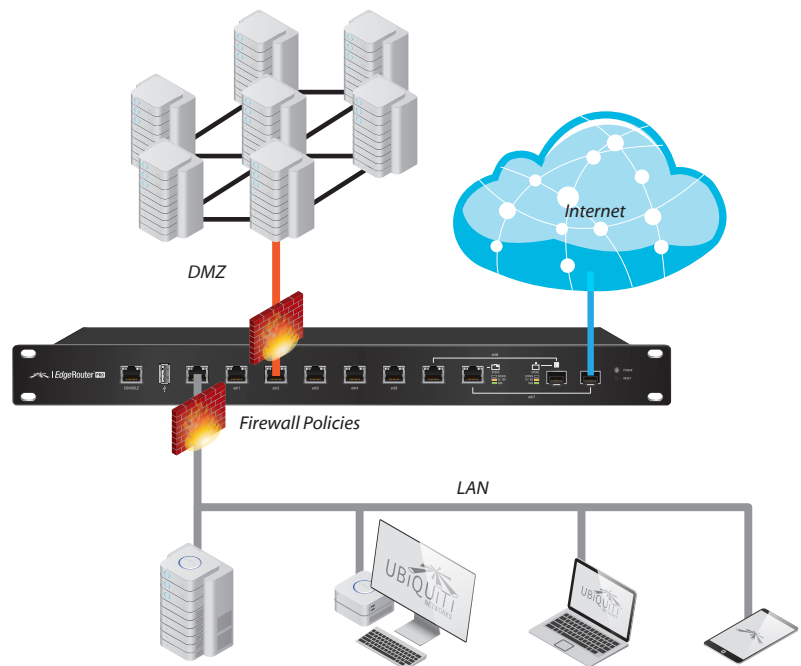
The EdgeRouter PoE and EdgeRouter Lite models are the world's first economical router capable of routing up to 1 million packets per second.

Available in a rackmountable form factor with eight functional ports, the EdgeRouter Pro and 8-Port EdgeRouter models are even faster, capable of routing up to 2 million+ packets per second.

Powered by a proprietary and intuitive graphical interface, EdgeOS™, EdgeRouters can easily be configured for routing, security, and management features required to efficiently run your network. For advanced network professionals, an integrated CLI is available for quick and direct access using familiar commands.



Typical Service Provider Deployment



Example of Enterprise Deployment with SFP Connection to the Internet

Manage Your Network

DHCP Server Set up multiple DHCP servers to assign IP ranges in different subnets on the different interfaces. Easily control dynamic and static IP addressing for your network devices.

Monitoring Tools Conveniently track network activity and devices from tools such as *Ping*, *Trace*, *Discover*, *Packet Capture*, and *Log Monitor*.

User Accounts Manage access to the EdgeRouter using unique administrator and operator accounts.

Secure Your Network

Firewall Policies Organize the rules you apply in the order you specify.

Firewall Groups Apply the policies to groups filtered by IP address, network address, or port number.

NAT Rules The EdgeRouter changes packet addressing based on your customized source and destination NAT rules.

Direct Traffic Flow

Interfaces Each Gigabit port functions as an independent interface. You can also configure Virtual Local Area Network (VLAN) interfaces for network segmentation.

Routing Configure static routes and dynamic routing protocols to effectively manage the routes used by the EdgeRouter.

With these capabilities and more, the EdgeRouter provides the centralized control you need to optimize the performance and reliability of your network.

Models

EdgeRouter PRO

Model: ERPro-8

- (6) Gigabit routing ports
- (2) Gigabit RJ45/SFP combination ports
- 2 million+ packets per second for 64-byte packets
- 8 Gbps for packets 512 bytes or larger in size
- Rackmountable



Front Panel



Back Panel

8-Port EdgeRouter

Model: ER-8

- (8) Gigabit routing ports
- 2 million packets per second for 64-byte packets
- 8 Gbps for packets 512 bytes or larger in size
- Rackmountable



Front Panel



Back Panel

Models

EdgeRouter PoE

Model: ERPoe-5

- (5) Gigabit routing ports
- (5) PoE configurable ports
- Supports 24V or 48V* PoE
- (3) ports configurable for switching
- 1 million packets per second for 64-byte packets



Front Panel



Back Panel

EdgeRouter Lite

Model: ERLite-3

- (3) Gigabit routing ports
- 1 million packets per second for 64-byte packets
- Silent, fanless operation
- Compact, durable metal casing



Front Panel



Back Panel

* 48V available when using 48VDC Power Adapter (not included).



Software Specifications

EdgeOS	
Interface/Encapsulation	Ethernet 802.1q VLAN PPPoE GRE IP in IP Bridging Bonding (802.3ad)
Addressing	Static IPv4/IPv6 Addressing DHCP/DHCPv6
Routing	Static Routes OSPF/OSPFv3 RIP/RIPng BGP (with IPv6 Support) IGMP Proxy
Security	ACL-Based Firewall Zone-Based Firewall NAT
VPN	IPSec Site-to-Site and Remote Access OpenVPN Site-to-Site and Remote Access PPTP Remote Access L2TP Remote Access PPTP Client
Services	DHCP/DHCPv6 Server DHCP/DHCPv6 Relay Dynamic DNS DNS Forwarding VRRP RADIUS Client Web Caching PPPoE Server
QoS	FIFO Stochastic Fairness Queueing Random Early Detection Token Bucket Filter Deficit Round Robin Hierarchical Token Bucket Ingress Policing
Management	Web UI CLI (Console, SSH, Telnet) SNMP NetFlow LLDP NTP UBNT Discovery Protocol Logging

EdgeRouter™ PRO

Hardware Specifications

Model: ERPro-8	
Dimensions	484 x 164 x 44 mm (19.06 x 6.46 x 1.73 in)
Weight	2.3 kg (5.07 lb)
Max. Power Consumption	40 W
Power	Internal AC/DC Power Adapter, 60 W (24V, 2.5A)
Power Input	110 - 240VAC
Button	Reset
LED	Power
Processor	Dual-Core 1 GHz, MIPS64 with Hardware Acceleration for Packet Processing
System Memory	2 GB DDR3 RAM
On-Board Flash Storage	4 GB
Certifications	CE, FCC, IC
Rack-Mount	Yes
Operating Temperature	-10 to 45° C (14 to 113° F)
Operating Humidity	10 - 90% Non-Condensing
Layer 3 Forwarding Performance	
Packet Size: 64 Bytes	2,400,000 pps
Packet Size: 512 Bytes or Larger	8 Gbps (Line Rate)
LEDs Per Port	
Serial Console Port	
Data Ports	Speed/Link/Activity
Networking Interfaces	
Serial Console Port	(1) RJ45 Serial Port
Data Ports	(6) 10/100/1000 RJ45 Ports (2) 10/100/1000 RJ45/SFP Combination Ports



EdgeRouter™

Hardware Specifications

Model: ER-8	
Dimensions	484 x 164 x 44 mm (19.06 x 6.46 x 1.73 in)
Weight	2.3 kg (5.07 lb)
Power	35 W
Power Method	Internal AC/DC Power Adapter, 60 W (24V, 2.5A)
Power Supply	110 - 240VAC
Button	Reset
LED	Power
Processor	Dual-Core 800 MHz, MIPS64 with Hardware Acceleration for Packet Processing
System Memory	2 GB DDR3 RAM
On-Board Flash Storage	4 GB
Certifications	CE, FCC, IC
Rack-Mount	Yes
Operating Temperature	-10 to 45° C (14 to 113° F)
Operating Humidity	10 - 90% Non-Condensing
Layer 3 Forwarding Performance	
Packet Size: 64 Bytes	2,000,000 pps
Packet Size: 512 Bytes or Larger	8 Gbps (Line Rate)
LEDs Per Port	
Serial Console Port	
Data Ports	Speed/Link/Activity
Networking Interfaces	
Serial Console Port	(1) RJ45 Serial Port
Data Ports	(8) 10/100/1000 Ethernet Ports



Hardware Specifications

Model: ERPoe-5	
Dimensions	200 x 90 x 30 mm (7.87 x 3.54 x 1.18 in)
Weight	360 g (12.7 oz)
Max. Power Consumption	60 W
Power	24VDC, 2.5A Power Adapter (Included)
Power Input	24VDC Input (Supported Range: 18 to 26VDC) or 48VDC Input (Supported Range: 38 to 54VDC)
Power Connector Size	DC Power Jack, 2.1 mm 2.1 mm ID, 5.5 mm OD
Button	Reset
Processor	Dual-Core 500 MHz, MIPS64 with Hardware Acceleration for Packet Processing
System Memory	512 MB DDR2 RAM
On-Board Flash Storage	2 GB
Certifications	CE, FCC, IC
Wall-Mount	Yes
Operating Temperature	-10 to 45° C (14 to 113° F)
Operating Humidity	10 - 90% Non-Condensing
Layer 3 Forwarding Performance	
Packet Size: 64 Bytes	1,000,000 pps
Packet Size: 512 Bytes or Larger	3 Gbps (Line Rate)
LEDs Per Port	
Serial Console Port	Power
Data Ports	PoE, Speed/Link/Activity
PoE Configurable Per Port	
Serial Console Port	N/A
Data Ports	Off/24V/48V*
Networking Interfaces	
Serial Console Port	(1) RJ45 Serial Port
Data Ports	(2) 10/100/1000 Ethernet Router Ports (3) 10/100/1000 Ethernet Router/Switch Ports

PoE with 24VDC Power Adapter	
PoE Out Voltage Range	22-24VDC
Max. PoE Wattage Per Data Port	12 W (24V)
Max. PoE Wattage Combined for All 5 Data Ports	50 W
PoE Method	Passive

PoE with 48VDC Power Adapter (Not Included)	
PoE Out Voltage Range	22-24VDC / 45-48VDC
Max. PoE Wattage Per Data Port	12 W (24V), 24 W (48V)
Max. PoE Wattage Combined for All 5 Data Ports	50 W
PoE Method	Passive

* 48V available when using 48VDC Power Adapter (not included).

EdgeRouter™ LITE

Hardware Specifications

Model: ERLite-3	
Dimensions	200 x 90 x 30 mm (7.87 x 3.54 x 1.18 in)
Weight	345 g (12.17 oz)
Max. Power Consumption	7 W
Power	12VDC, 1A Power Adapter (Included)
Power Input	9 to 24VDC Supported Voltage Range
Button	Reset
Processor	Dual-Core 500 MHz, MIPS64 with Hardware Acceleration for Packet Processing
System Memory	512 MB DDR2 RAM
On-Board Flash Storage	2 GB
Certifications	CE, FCC, IC
Wall-Mount	Yes
Operating Temperature	-10 to 45° C (14 to 113° F)
Operating Humidity	10 - 90% Non-Condensing
Layer 3 Forwarding Performance	
Packet Size: 64 Bytes	1,000,000 pps
Packet Size: 512 Bytes or Larger	3 Gbps (Line Rate)
LEDs Per Port	
Serial Console Port	Power
Data Ports	Speed/Link/Activity
Networking Interfaces	
Serial Console Port	(1) RJ45 Serial Port
Data Ports	(3) 10/100/1000 Ethernet Ports



All specifications in this document are subject to change without notice.
Ubiquiti products are sold with a limited warranty described at: www.ubnt.com/support/warranty

©2012-2014 Ubiquiti Networks, Inc. All rights reserved. Ubiquiti, Ubiquiti Networks, the Ubiquiti U logo, the Ubiquiti beam logo, EdgeMAX, EdgeOS, and EdgeRouter are trademarks or registered trademarks of Ubiquiti Networks, Inc. in the United States and in other countries. All other trademarks are the property of their respective owners.

 www.ubnt.com/edgemax


UBIQUITI
NETWORKS

 www.ubnt.com

JL031814